



New Zealand Bowhunters Society

www.nzbowhunters.co.nz

34th Annual World Koi Carp Classic

Ohinewai November 9th – 10th 2024

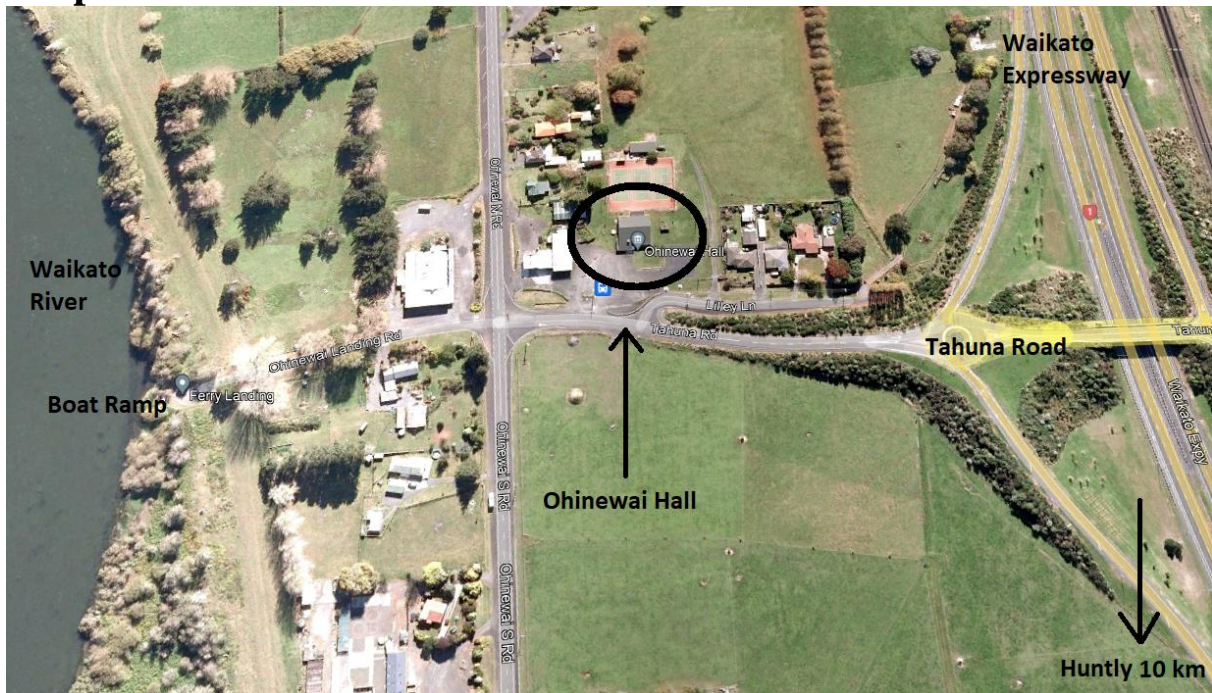
Weigh-in times are: Saturday 5pm to 7pm, Sunday 2pm to 4pm

The venue for the carp classic is the same as last year – the Ohinewai Hall. This is conveniently placed as it is right beside the Waikato Expressway, 10 km North of Huntly (see map below). There will be an NZBS committee meeting held in the hall on the Friday night, all members welcome.

Entry fees are \$20.00 per person, juniors \$10.00 (NZBS members only) and there will be plenty of ballot prizes to be won. On-line entries will be available from September. There will be a food caravan available (with cash and eftpos facilities). Any assistance with the organisation or running of this event is welcome. Please telephone Allan Metcalfe at 027 451-7012 or see our website for more details.

Do Not bring bins containing live koi or lakeweed to the weigh-in. There are several species of pest weeds in the areas we hunt so all fish bins, trailers, boats etc must be completely cleaned of any weeds before returning. Also, it is illegal to be in possession of live koi, so keep a club handy and hit them over the head as soon as you land them.

Carp Classic Venue – Ohinewai Hall



Gold Clams in the Waikato

The recent discovery of the invasive Gold Clams at Lakes Maraetai and Karapiro and in the Waikato River has meant that new restrictions are in place for all boat users of the Waikato River, its lakes and tributaries. See details and poster over page.

BIOSECURITY ALERT: FRESHWATER GOLD CLAM

HELP STOP THE SPREAD OF THIS PEST

This small shellfish reproduces rapidly and can clog water pipes and possibly overrun native species.



IF YOU SEE FRESHWATER GOLD CLAM:



Take a photo and note the location

SNAP IT



Call **0800 80 99 66** or use the online form at report.mpi.govt.nz

REPORT IT



Leave it where you found it

DON'T MOVE IT

When you move gear or watercraft from one river or lake to another:



CHECK



CLEAN



DRY

Find out more at
www.biosecurity.govt.nz/clam



Biosecurity New Zealand
Ministry for Primary Industries
Manatū Ahu Matua

KO TĀTOU THIS IS US
BIOSECURITY 2025



July 2025

A recent classification by MPI of the clam as an unwanted species means that it is an offense to knowingly spread them. Recreational and other users must implement Check Clean Dry (CCD) procedures. According to these procedures both gear and boats should be checked and washed, absorbent gear sterilized, and 48 hours drying is required. Obviously this will affect the carp classic and means that **competitors will have to hunt the same area on both days**. There will a CCD station for contestants to clean their boats and other gear immediately after the Sunday weigh-in.

For further details Google 'freshwater gold clams' and look for this MPI website:
[Freshwater gold clam \(Corbicula fluminea\) | NZ Government \(mpi.govt.nz\)](http://Freshwater_gold_clam_(Corbicula_fluminea)_|_NZ_Government_(mpi.govt.nz))